

How I treat

How I treat EBV lymphoproliferation

Helen E. Heslop¹¹Center for Cell and Gene Therapy, Baylor College of Medicine, The Methodist Hospital and Texas Children's Hospital, Houston

Epstein-Barr virus (EBV)-associated B-cell lymphoproliferation is a life-threatening complication after hematopoietic stem cell or solid organ transplantation resulting from outgrowth of EBV-infected B cells that would normally be controlled by EBV-cytotoxic T cells. During the past decade, early detection strategies, such as serial measurement of EBV-DNA load in peripheral blood samples, have helped to identify high-risk patients and to diagnose early lymphoproliferation. Treatment options include manipulation of the balance between outgrowing EBV-infected B cells and the EBV cytotoxic T lymphocyte response and targeting the B cells with monoclonal antibodies or chemotherapy. Major challenges remain for defining indications for preemptive therapies and integrating novel and conventional therapies. (Blood. 2009;114:4002-4008)

Introduction

Epstein-Barr virus (EBV) lymphoproliferative disease (LPD) is the result of the outgrowth of EBV-infected B cells that would normally be controlled by an effective EBV-specific cytotoxic T-cell response. LPD may occur during both primary and secondary immune deficiencies and even in some persons without documented immunodeficiency. In this article, I focus on EBV type III latency B-cell lymphoproliferation, which occurs during the immunosuppression that follows hematopoietic stem cell transplantation (HSCT) or solid organ transplantation (SOT). To understand the etiology of these lymphoproliferations and how manipulation of the immune system may be a treatment option, it is important to first understand the biology of EBV.

Biology of EBV

EBV is a latent γ -herpesvirus that infects more than 90% of the world's population. Primary lytic infection occurs in the oropharynx and may be asymptomatic or present as infectious mononucleosis.¹ EBV is highly immunogenic; and during primary infection, normal persons mount a vigorous humoral and cellular immune response with the cellular component consisting of CD4⁺ and CD8⁺ T cells, which control both primary infection and the periodic reactivations that occur in all EBV-seropositive persons.² Indeed, analyses using multimers to enumerate EBV-specific T cells have shown that up to 1% to 5% of circulating T cells in a normal EBV-seropositive person may be specific for EBV.^{3,4} After clearance of primary infection, EBV persists as an episome in infected B cells, establishing latent infection characterized by the expression of only a limited array of subdominant EBV antigens. There are 4 types of latency, distinguished by the pattern of EBV antigen expression in infected memory B cells (Figure 1).

Most infected circulating memory B cells express no viral antigens (type 0 latency), allowing them to remain invisible to the host immune system.⁵ EBNA1, which acts on a latent origin of replication, is responsible for coordinating replication of the latent episome in concert with replication of the host cells and is therefore expressed in all types of latency associated with cell division.⁶ Type

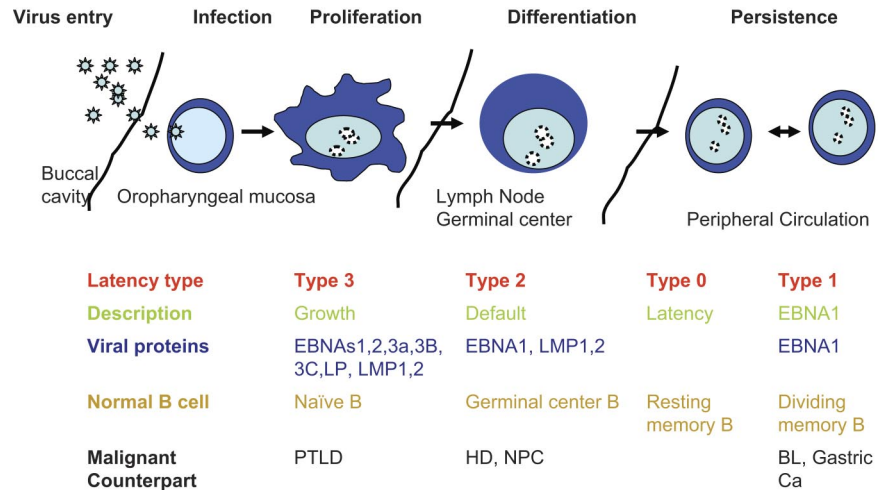
1 latency is associated with expression of only EBNA-1 and is seen in circulating B cells when they proliferate and in Burkitt lymphoma. In type 2 latency, LMP1 and LMP2 are also expressed in addition to EBNA1, and this pattern of expression is seen in germinal center B cells in healthy tonsils. The most immunogenic form of latency is type 3, in which all nuclear proteins (EBNAs -1, -2, -3A, -3B, -3C, and -LP) and 2 membrane proteins (LMP1 and LMP2) are expressed together with 2 small RNAs (EBERs). Type 3 latency occurs in B cells immortalized in vitro by EBV into permanently growing lymphoblastoid cell lines. Type 3 latency B cells are rarely detected in healthy seropositive persons, but their occurrence can be inferred from the high frequency of T cells specific for the EBNA3 proteins that persist long-term, and it is probable that periodic reactivation to type III latency is rapidly controlled by the EBV-specific T-cell response. Patients who are severely immunocompromised, however, so that that EBV-specific T cells are severely diminished, may develop B-cell proliferations that express the type 3 latency pattern of antigens. After SOT or HSCT, these disorders have been labeled posttransplantation lymphoproliferative disease (PTLD).⁷

Biology of PTLD

Because the immune deficiency of patients after HSCT or SOT may disrupt the normal balance between latently infected B-cell proliferation and the EBV-specific T-cell response, the increased number of latently infected B cells⁸ may develop into PTLD, which typically presents with lymphadenopathy or discrete nodules but may be localized to one specific site or involve the allograft after SOT. PTLD may also present as more diffuse disease that is more difficult to diagnose and may be misinterpreted as a fulminant sepsis syndrome.⁹

Histologically, PTLD includes a heterogeneous group of lymphoproliferative disorders ranging from reactive, polyclonal hyperplasia to aggressive non-Hodgkin lymphomas. A revised classification was published in 2008 by the World Health Organization and recommends classifying PTLD into 4 categories: (1) early lesions,

Figure 1. EBV latent life cycle. Virus enters through mucosal routes (shown is the buccal cavity), then infects normal naive B cells circulating through mucosal sites. Virus expresses type 3 latency, which drives B-cell proliferation and expands the infected memory pool. B-cell differentiation into the memory compartments occurs in germinal centers driven by type 2 latency proteins. Infected memory B cells exiting the germinal center down-regulate viral proteins and are invisible to the immune response. EBNA1 is expressed during homeostatic proliferation to maintain the latent viral episome. Virus replication is induced at mucosal sites, and virus is released into the saliva. PTLD indicates posttransplantation lymphoproliferative disease; HD, Hodgkin disease; NPC, nasopharyngeal cancer, and BL, Burkitt lymphoma.



(2) polymorphic PTLD, (3) monomorphic PTLD, and (4) classic Hodgkin lymphoma-type PTLD¹⁰ (Table 1). All types are associated with EBV. Despite this and earlier efforts to standardize the pathologic classification of PTLD, neither histology nor clonality consistently predicts outcome.¹¹

PTLD after HSCT is predominantly derived from donor B cells and typically occurs within the first 6 months after transplantation, before reconstitution of the EBV-specific cytotoxic T lymphocyte (CTL) response. It can, however, occur later in the most severely immunocompromised patients. Risk factors include the degree of mismatch between donor and recipient, manipulation of the graft to deplete T cells, and the degree and duration of immunosuppression used to prevent and treat graft-versus-host disease (GVHD).⁹ Although the proliferating B cells are almost always of donor origin, recent reports have described a high incidence of PTLD in pediatric patients who received reduced intensity conditioning regimens that included ATG or Campath, and may be a consequence of persisting recipient-derived B cells.^{12,13}

In recipients of SOTs, the severe impairment of T-cell function as result of the immunosuppression required to prevent allograft rejection also places these patients at risk for the development of PTLD. In SOT recipients, PTLD is predominantly of recipient origin. Risk factors for developing this complication include the degree of immunosuppression and development of primary infection after transplantation, so a higher incidence is seen in lung and small bowel transplant recipients as well as in EBV-seronegative pediatric patients receiving a transplant from an EBV-seropositive donor.¹⁴ Most PTLD occurs in the first year after SOT, and cases occurring later may be EBV-negative and have cytogenetic abnormalities.

Diagnosis

As PTLD may evolve progressively from a polyclonal disorder to a more aggressive monoclonal variant, early diagnosis is important so that treatment can be promptly instituted. There has therefore been much interest in developing predictive assays to identify patients with early disease. Measurement of EBV load by quantitative polymerase chain reaction amplification assays can be a sensitive aid to diagnosis, but it is unfortunately not always specific for disease onset. Furthermore, different assays use whole blood, serum, or peripheral blood mononuclear cells (PBMCs) and require differing interpretation. When PBMCs are assayed, an elevated EBV DNA may reflect both EBV in normal B cells (a population that may be expanded in immunosuppressed patients) and EBV in transformed cells. Assays of EBV in serum reflect virus shedding, which occurs intermittently in normal seropositive persons from epithelium and also from lytically transformed B cells as well as virus released from necrotic transformed cells. Assays measuring whole blood will measure EBV from all these sources. In general, assays using PBMCs are the most sensitive; but in all assays, elevated loads may not always reflect PTLD.

Initial studies in recipients of HSCT that were selectively T cell-depleted to prevent GVHD suggested that an elevated EBV-DNA load was highly predictive of EBV-PTLD.^{15,16} Follow-up studies, however, which included a broader range of HSCT recipients, showed that only 50% of patients with elevated EBV-DNA subsequently developed PTLD.¹⁷ Nevertheless, recent evidence-based guidelines from the European Conference in Infections in Leukemia recommend weekly screening of EBV-DNA for

Table 1. PTLD histologic classification (WHO classification 2008)

Category	Clonal status	EBV status	Oncogene/tumor suppressor gene changes
"Early" lesions			
Plasmacytic hyperplasia, infectious mononucleosis-like lesion	Polyclonal	Always EBV ⁺	None
Polymorphic PTLD	Monoclonal	Always EBV ⁺	None
Monomorphic			
B-cell lymphomas (DLCL, Burkitt, plasma cell myeloma, Plasmacytoma-like lesions)	Monoclonal	Frequently EBV ⁺	
T-cell lymphoma (peripheral T-cell lymphoma, hepatosplenic)		Rarely EBV ⁺	
Classic Hodgkin lymphoma-like PTLD	Monoclonal	Frequently EBV ⁺	None

Data from Swerdlow et al.¹⁰

at least 3 months in high-risk allogeneic HSCT recipients.¹⁸ Similarly, whereas up to 50% of SOT recipients may have an elevated EBV-DNA load after transplantation, only a much smaller subset will develop PTLD.¹⁹ In both sets of patients, serial monitoring is therefore important to distinguish patients with a stable-elevated EBV-DNA load from those with increasing EBV-DNA, which may indicate developing PTLD. Combined monitoring of EBV-DNA and EBV-specific CTL responses appears to better predict individual patients at risk for PTLD development.²⁰⁻²³ CTL response can be assessed by major histocompatibility complex class I peptide-multimer complexes, which enumerate EBV-specific CTL, or functionally by measuring interferon- γ secretion in response to antigenic stimulation. Unfortunately, neither assay is available outside the research setting. Changes in EBV-DNA load therefore need to be considered along with clinical symptoms, such as fever and lymphadenopathy, and imaging studies, before deciding on the need for intervention. The context and risk profile are also important in deciding when to intervene, and I would have a lower threshold for intervention in a patient early after HSCT for immune deficiency than a stable patient several months after kidney transplantation. Similarly, early intervention or even prophylactic administration may be warranted where there is a very high risk of developing PTLD, such as a patient with severe GVHD who has received potent T cell-depleting or -suppressing antibodies.²⁴

Treatment options

Treatment options for EBV-PTLD include manipulating the balance between outgrowing EBV-infected B cells and the EBV CTL response, or targeting the B cells with monoclonal antibodies or chemotherapy.

Restoring immune response to EBV

EBV-associated tumors express viral derived antigens and are excellent antigen-presenting cells, expressing high levels of immune system costimulatory molecules. Therefore, one therapeutic option is to manipulate the immune system to target and eradicate these malignancies. In HSCT recipients in particular, treatment strategies aim to tilt the balance toward EBV immune responses either by depleting the B-cell population (including EBV-infected B cells) or by augmenting the cellular immune response to EBV.

Reducing immunosuppression. Reducing immunosuppression to restore immune responses to EBV is usually not a useful approach for treating LPD early after HSCT because the patients are profoundly immunosuppressed and the regenerating immune system usually cannot recover fast enough to eradicate the malignant cells. When patients are later after transplantation with partial immune recovery, reducing immunosuppression alone may be successful,²⁵ and it has also been used as a prophylactic strategy in recipients with increasing EBV DNA levels but no evidence of lymphoma.²⁶ In SOTs, where it is a previously normal immune system that has been immunosuppressed, reduction of antirejection drugs may be more useful, and reductions in immunosuppression in response to a rising EBV viral load have indeed reduced the incidence of PTLD in pediatric liver transplant recipients.¹⁹ Studies of reducing immunosuppression in SOT recipients with overt PTLD, however, have yielded variable results, probably because the process has been empiric with multiple regimens and endpoints

used. Because reduction of immunosuppressive therapy carries the risk of graft rejection, graft function must be monitored closely, especially in heart, lung, and liver allograft recipients, for whom no effective alternatives are available if rejection occurs. Nevertheless, single-center studies report response rates of up to 75% in patients treated with this modality alone or in combination with surgery.^{27,28} Factors predicting the failure of reduction of immunosuppression as a single treatment modality include elevated lactate dehydrogenase, organ dysfunction, and multiorgan involvement.²⁷ The Southwest Oncology Group and the Eastern Cooperative Oncology Group have reported a prospective clinical trial to evaluate reduction of immunosuppression, which mandated a 50% reduction in immunosuppressive agents for 2 weeks followed by a further 50% reduction for 1 week if not in complete remission. In this study, only 1 of 16 patients attained a partial response, a much lower response rate than reported in single-center studies.²⁹ This strategy is still reasonable in SOT recipients with limited disease, but the patient should be monitored closely so he or she can be transitioned to alternate therapies if needed.

Unmanipulated donor T cells. Because most HSCT cell donors are EBV seropositive, an EBV-specific T-cell response can often be provided simply by infusing unmanipulated donor lymphocytes. Although this approach has shown clinical efficacy in HSCT patients with established PTLD with response rates of more than 70%, it carries a significant risk of inducing severe or fatal GVHD, as the frequency of alloreactive T cells in the cell product is more than a log higher than the frequency of virus-reactive T cells.^{30,31} One investigational approach to circumvent this problem is to transduce T cells with a suicide gene, such as the thymidine kinase gene, which can be activated by infusion of ganciclovir should the recipient develop GVHD. This approach has proved effective in early phase studies and is being evaluated in a phase 3 licensing trial in Europe.³²

EBV-specific T cells. The problem of alloreactivity can also be overcome by infusing EBV-specific CTLs generated using EBV-transformed lymphoblastoid B-cell lines, which will effectively present the viral antigens expressed on the tumor cells as antigen-presenting cells. We have given donor-derived EBV-specific CTL to more than 100 patients after HSCT and found them to be highly effective as prophylaxis in high-risk patients with a history of PTLD or patients receiving selective T-cell depletion.^{33,34} They have also proved effective as treatment for overt PTLD in more than 80% of patients,³⁵ a finding confirmed by other investigators, who have also shown that EBV-CTLs are active in transplant recipients with rituximab-resistant PTLD.³⁶⁻³⁹ In the SOT recipient, there are additional challenges because patients remain on long-term immunosuppression. Several studies have nonetheless shown that it is possible to generate autologous EBV CTLs from these patients, which will restore short-term EBV-specific immunity that controls disease progression. Long-term persistence, however, has not been apparent in patients who continue to receive immunosuppression.⁴⁰⁻⁴² In addition, both these approaches are currently confined to experimental protocols, and additional drawbacks are the time (2-3 months) and facilities required for CTL production.

One solution to make this strategy more accessible to a larger number of patients is to bypass the development of separate lines for each affected patient by developing a bank of partially human leukocyte antigen (HLA)-matched, allogeneic lines, which can be readily and rapidly available. Investigators in Great Britain reported a phase 2 clinical trial using partially HLA-matched

Table 2. Rituximab response rates

Type of transplantation	Response rate	Reference
Cord	5/9	Brunstein et al ⁴⁵
T cell–depleted HSCT	3/3	van Esser et al ⁴⁶
Allogeneic HSCT	3/3	Kuehnle et al ⁴⁴
Autologous CD34 selected HSCT	4/5	Powell et al ⁴⁷
Solid organ transplantation	6/6	Savoldo et al ⁴⁸
Solid organ transplantation	7/8	Ganne et al ⁴⁹
Solid organ transplantation	6/11 CR; 1/11 PR	Blaes et al ⁵⁰
Solid organ transplantation	9/17 CR; 1/17 PR	Oertel et al ⁵¹
Solid organ transplantation	19/43	Choquet et al ⁵²

Initial response rates to rituximab in several small trials in patients with PTLD after transplantation.

CR indicates complete response; and PR, partial response.

allogeneic CTL for PTLD therapy in a cohort of HSCT and SOT recipients who had failed to respond to conventional PTLD therapy, obtaining a 64% (21 of 33) and 52% (17 of 33) response rate at 5 weeks and 6 months, respectively.⁴³ Patients with closer HLA-matching donors showed better responses at 6 months.

Targeting B cells

Antibody therapy. As most cases of PTLD arise in donor- or recipient-derived B cells, one strategy for prevention and treatment is to eliminate EBV-infected B cells. Antibody therapy targets B cell–specific surface antigens present on the EBV-transformed malignant cells. The most widely used antibody is rituximab, a chimeric murine/human monoclonal anti-CD20 antibody. Rituximab has been used as prophylaxis and treatment for PTLD after HSCT, with initial response rates between 55% and 100%,⁴⁴⁻⁴⁷ a range that probably reflects differences in the treated patient populations. Rituximab also has activity in PTLD after SOT, in which response rates of 44% to 100% have been reported in several small studies.⁴⁸⁻⁵¹ The results of these studies are summarized in Table 2. Fewer late-phase studies have been reported, but a recent phase 2 clinical trial using rituximab to treat PTLD reported a response rate of 44% at day 80. This trial included patients whose only previous therapy was reduction of immunosuppression but excluded patients with central nervous system (CNS) PTLD.⁵²

Because CD20 expression is not confined to the malignant cells, normal B cells are also destroyed. This can be a significant concern in patients who are already immunosuppressed, and fatal viral infections have been reported after rituximab therapy.⁵³ As rituximab can deplete B cells for more than 6 months in these already immunosuppressed patients, it should be used as preemptive therapy for PTLD only where there is a strong probability of subsequent lymphoma. An additional concern is that, when used as therapy, it does not restore the cellular immune response to EBV, which is a crucial requirement if EBV-mediated B-cell proliferation is to be controlled long-term.⁴⁸ This may not be a major problem in most HSCT recipients, in whom recovery of a donor-derived immune response should provide long-term protection, but it is a concern in SOT patients who remain on long-term immunosuppression. Indeed, a long-term follow-up study of SOT patients treated with rituximab showed that 57% had progressive disease at 12 months,⁵⁴ whereas another study showed PTLD recurrence in 50%.⁴⁸ A final concern is that only one antigen is targeted and antigen-loss tumor cell variants may be selected.

Antiviral agents. Antiviral treatment for lytic EBV infection currently makes use of nucleoside analogs, which target the virus-specific enzyme, thymidine kinase (TK) expressed in lytically infected cells. The lack of viral TK expression in EBV-positive tumors during viral latency, however, makes antiviral therapy alone ineffective as an antineoplastic therapy. Antiviral agents may have a role in prophylaxis in EBV-seronegative SOT recipients as they can block EBV production in donor B cells and subsequent infection of recipient B cells.⁵⁵ Moreover, long-term prophylaxis with antiviral agents or intravenous immunoglobulin may decrease the incidence of PTLD by limiting intercellular virus transmission; several centers use prophylactic acyclovir or intravenous immunoglobulin in the first 6 months after allograft, during which time the immunosuppression is most intense.⁵⁶ Once PTLD is established, however, antiviral agents will have no effect on the growth of type II latency cells that are already transformed. One possible means of exploiting the susceptibility of lytic cycle cells to acyclovir or ganciclovir is to induce reexpression of the viral-associated TK or the lytic cycle of EBV infection, using chemotherapy⁵⁷ or arginine butyrate.⁵⁸ A trial of arginine butyrate and ganciclovir included 6 patients with PTLD and encouragingly reported 2 complete and 3 partial responses.⁵⁸

Radiation therapy and surgery. When PTLD is confined to one site, radiation and/or surgery can effectively control local disease. Indeed, in one report on the outcome of PTLD occurring late after SOT, all patients treated with surgery or radiotherapy for limited disease and reduction of immunosuppression obtained sustained complete responses.⁵⁹ Surgery and radiation also have a role in managing local complications of PTLD, such as compression of vital organ structures.

Chemotherapy. Chemotherapy with regimens used in lymphoma therapy, such as CHOP (cyclophosphamide, doxorubicin, vincristine, and prednisone), remains a therapeutic option for patients who fail to respond to immune manipulation or rituximab. One concern is that PTLD patients may be more susceptible to chemotherapy toxicity (particularly HSCT recipients who have already received intensive chemotherapy), and they are also at increased risk of infection because of their preexisting immune suppression. Although high toxicity rates were seen in initial reports, more recent reports have shown better outcomes. A recent retrospective analysis of standard CHOP in 26 adults with PTLD demonstrated an overall response rate of 65% and median overall and progression-free survivals of 13.9 and 42 months, respectively, after a median follow-up of 8.8 years.⁶⁰ PTLD generally remains chemotherapy-sensitive after progression or failure to respond to rituximab used as first-line therapy, and CHOP salvage therapy can achieve an overall response rate up to 70% in these patients.⁶¹ By comparison, EBV-unrelated, PTLD after SOT has a lower response rate but may respond to high-dose chemotherapy followed by HSC rescue.⁶² To reduce toxicity from chemotherapy, a study evaluated lower-dose chemotherapy with cyclophosphamide and prednisone in 36 pediatric patients who had failed frontline therapy and reported an excellent overall response rate of 83%.⁶³ This lower-dose regimen therefore appears effective as salvage therapy for children with PTLD.

PTLD involving the CNS can present a particular challenge as multiple lesions can be present and the prognosis is poor.^{64,65} In the largest reported series, the best outcomes were seen with radiation for isolated CNS disease.⁶⁵ Responses have also been reported with reduction in immunosuppression and rituximab, although this agent crosses the blood-brain barrier poorly.⁶⁶ Chemotherapy with high-dose methotrexate has also induced responses in a report of

Table 3. Diagnosis of PTLD

Test	Information gained	Limitations
EBV viral load	Elevated level supports diagnosis	High sensitivity; specificity varies with clinical scenario
Imaging	Enlarged lymph nodes or nodules support diagnosis	Differential causes for lymphadenopathy
Biopsy affected organ	Confirm EBV positivity by LMP1 immunostaining and EBERs; assess histology (high-grade monoclonal lymphoma vs polyclonal lymphoproliferation); immunophenotyping (CD20 expression); cytogenetics	Invasive procedure depending on organ involved

administration to 4 children with CNS PTLD after liver transplantation.⁶⁷

Hydroxyurea is another less toxic option that can eradicate episomal DNA elements, which may be required for the continued growth of EBV-associated lymphomas. There are several case reports showing the activity of this agent in EBV-associated B-cell lymphoproliferations, particularly with CNS involvement, but these results have not yet been confirmed in prospective trials.^{68,69} Rapamycin also has activity against EBV-transformed B cells in vitro, and there are anecdotal reports of using the agent as a substitute immunosuppressive agent that can treat PTLD.⁷⁰

Model treatment schema

Perhaps one of the most contentious issues with PTLD is not how but when to treat. My general philosophy is to reserve preemptive

treatment or treatment based on EBV DNA alone for very-high-risk situations, such as a patient with a diagnosis of X-linked lymphoproliferative disease or Wiskott-Aldrich syndrome.⁷¹ Treatment for rejection or GVHD with an intensive anti-T-cell antibody that does not also target B cells would also place a patient in a high-risk category, in which preemptive treatment of a rising EBV DNA in the absence of other symptoms or signs could be considered.²⁴

In other settings, my goal would be to diagnose PTLD at an early stage so it could be treated promptly using the diagnostic tests reviewed in Table 3. I would therefore monitor EBV DNA in high-risk recipients at 1 to 2 week intervals. In patients who develop elevated levels in the absence of symptoms, modulation of immunosuppressive therapy (if feasible) is a reasonable strategy. I would have a low threshold for imaging studies in patients with elevated EBV DNA who also had clinical symptoms, such as fever, that were consistent with the diagnosis. If imaging or physical examination shows enlarged lymph nodes or other evidence of disease, it is helpful to biopsy sites of involvement to confirm the diagnosis and exclude other infections that may have a similar imaging appearance. Biopsy also allows confirmation of CD20 expression, allowing rituximab to be used. In patients with later PTLD after SOT, cytogenetic studies are also helpful in identifying lymphomas that will be less susceptible to immune manipulation and should be treated like lymphomas arising in immunocompetent persons. A monitoring and treatment algorithm is outlined in Figure 2. In patients with localized disease, surgery alone or with reduction of immunosuppression may provide sufficient control of disease. In SOT patients with early disease, a trial of reduction in immunosuppression alone is reasonable, with the addition of rituximab in patients who fail to respond or progress. SOT patients with higher-grade disease and HSCT recipients unless they have some evidence of recovery of an EBV-specific T-cell response should proceed to rituximab.

In patients with more extensive higher-grade disease or patients who progress after initial maneuvers, the options include chemotherapy or T-cell therapies. Donor T cells are only an option in HSCT recipients, whereas EBV-CTLs are investigational and will be restricted to centers participating in clinical trials. Nevertheless, given the morbidity of standard chemotherapy, particularly in HSCT recipients who have often received extensive previous chemotherapy, I think it is reasonable to consider cell therapy at this stage.

In conclusion, one problem in developing a treatment algorithm for treating EBV-associated PTLD is the lack of later-phase trials from which to develop evidence-based guidelines. Hopefully, as newer therapies, such as allogeneic EBV CTLs, and more targeted chemotherapy regimens are evaluated, more definitive trials to treat EBV lymphoproliferations will be designed and completed so that treatment in the future can be more evidence-based.

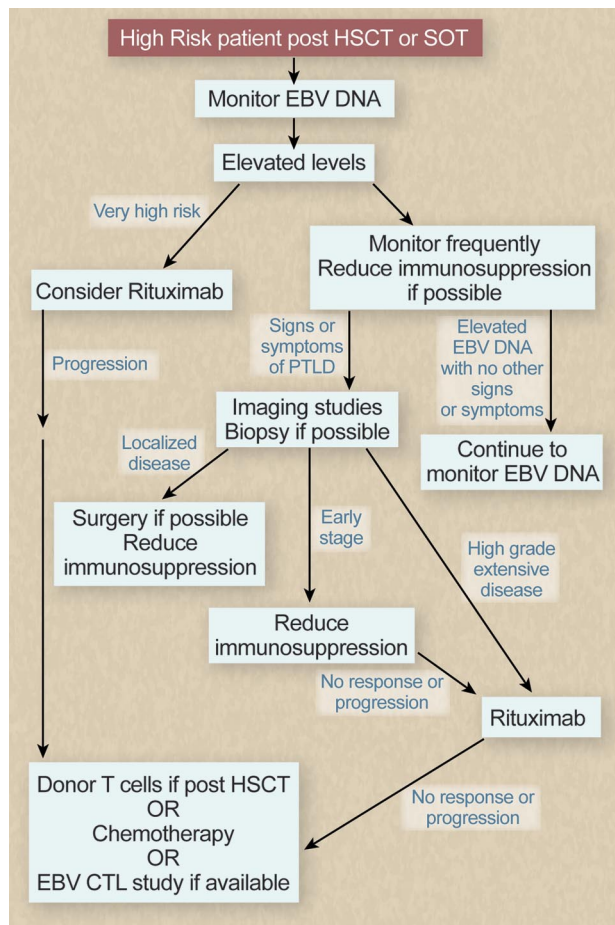


Figure 2. Monitoring and treatment algorithm. Professional illustration by Debra T. Dartez.

Acknowledgments

The author thanks Dr Cliona Rooney for her contribution to Figure 1.

This work was supported by the National Institutes of Health (grants PO1 CA94237, P50CA126752) and the Leukemia & Lymphoma Society.

References

- Cohen JL. Epstein-Barr virus infection. *N Engl J Med*. 2000;343(7):481-492.
- Hislop AD, Taylor GS, Sauce D, Rickinson AB. Cellular responses to viral infection in humans: lessons from Epstein-Barr virus. *Annu Rev Immunol*. 2007;25:587-617.
- Callan MF, Tan L, Annels N, et al. Direct visualization of antigen-specific CD8+ T cells during the primary immune response to Epstein-Barr virus in vivo. *J Exp Med*. 1998;187(9):1395-1402.
- Yang J, Lemas VM, Flinn IW, Krone C, Ambinder RF. Application of the ELISPOT assay to the characterization of CD8(+) responses to Epstein-Barr virus antigens. *Blood*. 2000;95(1):241-248.
- Thorley-Lawson DA, Gross A. Persistence of the Epstein-Barr virus and the origins of associated lymphomas. *N Engl J Med*. 2004;350(13):1328-1337.
- Yates JL, Warren N, Sugden B. Stable replication of plasmids derived from Epstein-Barr virus in various mammalian cells. *Nature*. 1985;313:812-815.
- Nalesnik MA. Clinicopathologic characteristics of post-transplant lymphoproliferative disorders. *Recent Results Cancer Res*. 2002;159:9-18.
- Babcock GJ, Decker LL, Freeman RB, Thorley-Lawson DA. Epstein-Barr virus-infected resting memory B cells, not proliferating lymphoblasts, accumulate in the peripheral blood of immunosuppressed patients. *J Exp Med*. 1999;190(4):567-576.
- Gottschalk S, Rooney CM, Heslop HE. Post-transplant lymphoproliferative disorders. *Annu Rev Med*. 2005;56:29-44.
- Swerdlow SH, Webber SA, Chadburn A, Ferry J. Post transplant lymphoproliferative disorders. In: Swerdlow SH, Campo E, Harris NL, eds. *Classification of Tumours of Haematopoietic and Lymphoid Tissues* (4th ed). Lyon, France: International Agency for Research on Cancer; 2008:342-349.
- Tsai DE, Hardy CL, Tomaszewski JE, et al. Reduction in immunosuppression as initial therapy for posttransplant lymphoproliferative disorder: analysis of prognostic variables and long-term follow-up of 42 adult patients. *Transplantation*. 2001;71(8):1076-1088.
- Cohen JM, Cooper N, Chakrabarti S, et al. EBV-related disease following haematopoietic stem cell transplantation with reduced intensity conditioning. *Leuk Lymphoma*. 2007;48(2):256-269.
- Brunstein CG, Weisdorf DJ, DeFor T, et al. Marked increased risk of Epstein-Barr virus-related complications with the addition of antithymocyte globulin to a nonmyeloablative conditioning prior to unrelated umbilical cord blood transplantation. *Blood*. 2006;108(8):2874-2880.
- Smith JM, Corey L, Healey PJ, Davis CL, McDonald RA. Adolescents are more likely to develop posttransplant lymphoproliferative disorder after primary Epstein-Barr virus infection than younger renal transplant recipients. *Transplantation*. 2007;83(11):1423-1428.
- Rooney CM, Loftin SK, Holladay MS, Brenner MK, Krance RA, Heslop HE. Early identification of Epstein-Barr virus-associated post-transplant lymphoproliferative disease. *Br J Haematol*. 1995;89(1):98-103.
- van Esser JW, van der HB, Meijer E, et al. Epstein-Barr virus (EBV) reactivation is a frequent event after allogeneic stem cell transplantation (SCT) and quantitatively predicts EBV-lymphoproliferative disease following T-cell-depleted SCT. *Blood*. 2001;98(4):972-978.
- Wagner HJ, Cheng YC, Huls MH, et al. Prompt versus preemptive intervention for EBV lymphoproliferative disease. *Blood*. 2004;103(10):3979-3981.
- Styczynski J, Reusser P, Einsele H, et al. Management of HSV, VZV and EBV infections in patients with hematological malignancies and after SCT: guidelines from the Second European Conference on Infections in Leukemia. *Bone Marrow Transplant*. 2009;43(10):757-770.
- Lee TC, Savoldo B, Rooney CM, et al. Quantitative EBV viral loads and immunosuppression alterations can decrease PTLD incidence in pediatric liver transplant recipients. *Am J Transplant*. 2005;5(9):2222-2228.
- Smets F, Latinne D, Bazin H, et al. Ratio between Epstein-Barr viral load and anti-Epstein-Barr virus specific T-cell response as a predictive marker of posttransplant lymphoproliferative disease. *Transplantation*. 2002;73(10):1603-1610.
- Meij P, van Esser JW, Niesters HG, et al. Impaired recovery of Epstein-Barr virus (EBV)-specific CD8+ T lymphocytes after partially T-depleted allogeneic stem cell transplantation may identify patients at very high risk for progressive EBV reactivation and lymphoproliferative disease. *Blood*. 2003;101(11):4290-4297.
- Lee TC, Goss JA, Rooney CM, et al. Quantification of a low cellular immune response to aid in identification of pediatric liver transplant recipients at high-risk for EBV infection. *Clin Transplant*. 2006;20(6):689-694.
- Annels NE, Kalpoe JS, Bredius RG, et al. Management of Epstein-Barr virus (EBV) reactivation after allogeneic stem cell transplantation by simultaneous analysis of EBV DNA load and EBV-specific T cell reconstitution. *Clin Infect Dis*. 2006;42(12):1743-1748.
- Carpenter PA, Appelbaum FR, Corey L, et al. A humanized non-FcR-binding anti-CD3 antibody, visilizumab, for treatment of steroid-refractory acute graft-versus-host disease. *Blood*. 2002;99(8):2712-2719.
- Heslop HE, Li C, Krance RA, Loftin SK, Rooney CM. Epstein-Barr infection after bone marrow transplantation. *Blood*. 1994;83:1706-1708.
- Cesaro S, Murrone A, Mengoli C, et al. The real-time polymerase chain reaction-guided modulation of immunosuppression enables the preemptive management of Epstein-Barr virus reactivation after allogeneic haematopoietic stem cell transplantation. *Br J Haematol*. 2005;128(2):224-233.
- Tsai DE, Hardy CL, Tomaszewski JE, et al. Reduction in immunosuppression as initial therapy for posttransplant lymphoproliferative disorder: analysis of prognostic variables and long-term follow-up of 42 adult patients. *Transplantation*. 2001;71(8):1076-1088.
- Paya CV, Fung JJ, Nalesnik MA, et al. Epstein-Barr virus-induced posttransplant lymphoproliferative disorders: ASTS/ASTP EBV-PTLD Task Force and the Mayo Clinic Organized International Consensus Development Meeting. *Transplantation*. 1999;68(10):1517-1525.
- Swinnen LJ, LeBlanc M, Grogan TM, et al. Prospective study of sequential reduction in immunosuppression, interferon alpha-2B, and chemotherapy for posttransplantation lymphoproliferative disorder. *Transplantation*. 2008;86(2):215-222.
- Heslop HE, Brenner MK, Rooney CM. Donor T cells to treat EBV-associated lymphoma. *N Engl J Med*. 1994;331(10):679-680.
- O'Reilly RJ, Small TN, Papadopoulos E, Lucas K, Lacerda J, Koulova L. Biology and adoptive cell therapy of Epstein-Barr virus-associated lymphoproliferative disorders in recipients of marrow allografts. *Immunol Rev*. 1997;157:195-216.
- Bonini C, Bondanza A, Perna SK, et al. The suicide gene therapy challenge: how to improve a successful gene therapy approach. *Mol Ther*. 2007;15(7):1248-1252.
- Rooney CM, Smith CA, Ng CYC, et al. Infusion of cytotoxic T cells for the prevention and treatment of Epstein-Barr virus-induced lymphoma in allogeneic transplant recipients. *Blood*. 1998;92(5):1549-1555.
- Heslop HE, Ng CYC, Li C, et al. Long-term restoration of immunity against Epstein-Barr virus infection by adoptive transfer of gene-modified virus-specific T lymphocytes. *Nat Med*. 1996;2:551-555.
- Gottschalk S, Rooney CM, Heslop HE. Post-transplant lymphoproliferative disorders. *Annu Rev Med*. 2005;56:29-44.
- Slobod KS, Benaim E, Woodruff L, et al. T cell immunotherapeutic populations control viral infections in bone marrow transplant recipients. *Immunol Res*. 2001;24(3):289-301.
- Gustafsson A, Levitsky V, Zou JZ, et al. Epstein-Barr virus (EBV) load in bone marrow transplant recipients at risk to develop posttransplant lymphoproliferative disease: prophylactic infusion of EBV-specific cytotoxic T cells. *Blood*. 2000;95(3):807-814.
- Comoli P, Basso S, Zecca M, et al. Preemptive therapy of EBV-related lymphoproliferative disease after pediatric haploidentical stem cell transplantation. *Am J Transplant*. 2007;7(6):1648-1655.
- O'Reilly RJ, Doubrovina E, Trivedi D, Hasan A, Kollen W, Koehne G. Adoptive transfer of antigen-specific T-cells of donor type for immunotherapy of viral infections following allogeneic hematopoietic cell transplants. *Immunol Res*. 2007;38(1):237-250.
- Comoli P, Labirio M, Basso S, et al. Infusion of autologous Epstein-Barr virus (EBV)-specific cytotoxic T cells for prevention of EBV-related lymphoproliferative disorder in solid organ transplant recipients with evidence of active virus replication. *Blood*. 2002;99(7):2592-2598.
- Khanna R, Bell S, Sherritt M, et al. Activation and adoptive transfer of Epstein-Barr virus-specific cytotoxic T cells in solid organ transplant patients

Authorship

Contribution: H.E.H. wrote the manuscript.

Conflict-of-interest disclosure: The author declares no competing financial interests.

Correspondence: Helen E. Heslop, Center for Cell and Gene Therapy, 1102 Bates St, Suite 1620, Houston, TX 77030; e-mail: hheslop@bcm.edu.

- with posttransplant lymphoproliferative disease. *Proc Natl Acad Sci U S A*. 1999;96(18):10391-10396.
42. Savoldo B, Goss JA, Hammer MM, et al. Treatment of solid organ transplant recipients with autologous Epstein Barr virus-specific cytotoxic T lymphocytes (CTLs). *Blood*. 2006;108(9):2942-2949.
 43. Haque T, Wilkie GM, Jones MM, et al. Allogeneic cytotoxic T-cell therapy for EBV-positive post-transplantation lymphoproliferative disease: results of a phase 2 multicenter clinical trial. *Blood*. 2007;110(4):1123-1131.
 44. Kuehnle I, Huls MH, Liu Z, et al. CD20 monoclonal antibody (rituximab) for therapy of Epstein-Barr virus lymphoma after hemopoietic stem-cell transplantation. *Blood*. 2000;95(4):1502-1505.
 45. Brunstein CG, Weisdorf DJ, DeFor T, et al. Marked increased risk of Epstein-Barr virus-related complications with the addition of antithymocyte globulin to a nonmyeloablative conditioning prior to unrelated umbilical cord blood transplantation. *Blood*. 2006;108(8):2874-2880.
 46. van Esser JW, Niesters HG, van der HB, et al. Prevention of Epstein-Barr virus-lymphoproliferative disease by molecular monitoring and preemptive rituximab in high-risk patients after allogeneic stem cell transplantation. *Blood*. 2002;99(12):4364-4369.
 47. Powell JL, Bunin NJ, Callahan C, Aplenc R, Griffin G, Grupp SA. An unexpectedly high incidence of Epstein-Barr virus lymphoproliferative disease after CD34+ selected autologous peripheral blood stem cell transplant in neuroblastoma. *Bone Marrow Transplant*. 2004;33(6):651-657.
 48. Savoldo B, Rooney CM, Quiros-Tejeira RE, et al. Cellular immunity to Epstein-Barr virus in liver transplant recipients treated with rituximab for post-transplant lymphoproliferative disease. *Am J Transplant*. 2005;5(3):566-572.
 49. Ganne V, Siddiqi N, Kamapath B, et al. Humanized anti-CD20 monoclonal antibody (Rituximab) treatment for post-transplant lymphoproliferative disorder. *Clin Transplant*. 2003;17(5):417-422.
 50. Blaes AH, Peterson BA, Bartlett N, Dunn DL, Morrison VA. Rituximab therapy is effective for posttransplant lymphoproliferative disorders after solid organ transplantation: results of a phase II trial. *Cancer*. 2005;104(8):1661-1667.
 51. Oertel SH, Verschuuren E, Reinke P, et al. Effect of anti-CD 20 antibody rituximab in patients with post-transplant lymphoproliferative disorder (PTLD). *Am J Transplant*. 2005;5(12):2901-2906.
 52. Choquet S, Leblond V, Herbrecht R, et al. Efficacy and safety of rituximab in B-cell post-transplantation lymphoproliferative disorders: results of a prospective multicenter phase 2 study. *Blood*. 2006;107(8):3053-3057.
 53. Suzan F, Ammor M, Ribrag V. Fatal reactivation of cytomegalovirus infection after use of rituximab for a post-transplantation lymphoproliferative disorder. *N Engl J Med*. 2001;345(13):1000.
 54. Choquet S, Oertel S, Leblond V, et al. Rituximab in the management of post-transplantation lymphoproliferative disorder after solid organ transplantation: proceed with caution. *Ann Hematol*. 2007;86(8):599-607.
 55. Heslop HE, Ng CY, Li C, et al. Long-term restoration of immunity against Epstein-Barr virus infection by adoptive transfer of gene-modified virus-specific T lymphocytes. *Nat Med*. 1996;2(5):551-555.
 56. Darenkov IA, Marcarelli MA, Basadonna GP, et al. Reduced incidence of Epstein-Barr virus-associated posttransplant lymphoproliferative disorder using preemptive antiviral therapy. *Transplantation*. 1997;64(6):848-852.
 57. Feng WH, Israel B, Raab-Traub N, Busson P, Kenney SC. Chemotherapy induces lytic EBV replication and confers ganciclovir susceptibility to EBV-positive epithelial cell tumors. *Cancer Res*. 2002;62(6):1920-1926.
 58. Perrine SP, Hermine O, Small T, et al. A phase 1/2 trial of arginine butyrate and ganciclovir in patients with Epstein-Barr virus-associated lymphoid malignancies. *Blood*. 2007;109(6):2571-2578.
 59. Dotti G, Fiocchi R, Motta T, et al. Lymphomas occurring late after solid-organ transplantation: influence of treatment on the clinical outcome. *Transplantation*. 2002;74(8):1095-1102.
 60. Choquet S, Trappe R, Leblond V, Jager U, Davi F, Oertel S. CHOP-21 for the treatment of post-transplant lymphoproliferative disorders (PTLD) following solid organ transplantation. *Haematologica*. 2007;92(2):273-274.
 61. Trappe R, Riess H, Babel N, et al. Salvage chemotherapy for refractory and relapsed posttransplant lymphoproliferative disorders (PTLD) after treatment with single-agent rituximab. *Transplantation*. 2007;83(7):912-918.
 62. Williams KM, Higman MA, Chen AR, et al. Successful treatment of a child with late-onset T-cell post-transplant lymphoproliferative disorder/lymphoma. *Pediatr Blood Cancer*. 2008;50:667-670.
 63. Gross TG, Bucuvalas JC, Park JR, et al. Low-dose chemotherapy for Epstein-Barr virus-positive post-transplantation lymphoproliferative disease in children after solid organ transplantation. *J Clin Oncol*. 2005;23(27):6481-6488.
 64. Phan TG, O'Neill BP, Kurtin PJ. Posttransplant primary CNS lymphoma. *Neuro Oncol*. 2000;2(4):229-238.
 65. Buell JF, Gross TG, Hanaway MJ, et al. Post-transplant lymphoproliferative disorder: significance of central nervous system involvement. *Transplant Proc*. 2005;37(2):954-955.
 66. Reshef R, Tsai DE. Rituximab for PTLD of the CNS: is it a "no-brainer?" *Onkologie*. 2008;31(12):650-651.
 67. Taj MM, Messahel B, Mycroft J, et al. Efficacy and tolerability of high-dose methotrexate in central nervous system positive or relapsed lymphoproliferative disease following liver transplant in children. *Br J Haematol*. 2008;140(2):191-196.
 68. Slobod KS, Taylor GH, Sandlund JT, Furth P, Helton KJ, Sixbey JW. Epstein-Barr virus-targeted therapy for AIDS-related primary lymphoma of the central nervous system. *Lancet*. 2000;356(9240):1493-1494.
 69. Pakakasama S, Eames GM, Morriss MC, et al. Treatment of Epstein-Barr virus lymphoproliferative disease after hematopoietic stem-cell transplantation with hydroxyurea and cytotoxic T-cell lymphocytes. *Transplantation*. 2004;78(5):755-757.
 70. Garcia VD, Bonamigo Filho JL, Neumann J, et al. Rituximab in association with rapamycin for post-transplant lymphoproliferative disease treatment. *Transpl Int*. 2003;16(3):202-206.
 71. Cohen JM, Sebire NJ, Harvey J, et al. Successful treatment of lymphoproliferative disease complicating primary immunodeficiency/immunodysregulatory disorders with reduced-intensity allogeneic stem-cell transplantation. *Blood*. 2007;110(6):2209-2214.